

**REGIONAL SPECIALISED METEOROLOGICAL CENTRE-TROPICAL CYCLONES, NEW DELHI  
TROPICAL WEATHER OUTLOOK**

**DEMS-RSMC TROPICALCYCLONES NEW DELHI DATED 16.10.2022**

**TROPICAL WEATHER OUTLOOK FOR NORTH INDIAN OCEAN (THE BAY OF BENGAL OF BENGAL OF BENGAL AND ARABIAN SEA) VALID FOR NEXT 120 HOURS ISSUED AT 0600 UTC OF 16.10.2022 BASED ON 0300 UTC OF 16.10.2022.**

**BAY OF BENGAL:**

YESTERDAY'S CYCLONIC CIRCULATION OVER WESTCENTRAL BAY OF BENGAL AND ALONG & OFF SOUTH ANDHRA PRADESH & NORTH TAMILNADU COASTS BECAME LESS MARKED AT 0300 UTC OF TODAY, THE 16<sup>TH</sup> OCTOBER, 2022.

A CYCLONIC CIRCULATION IS LIKELY TO FORM OVER NORTH ANDAMAN SEA & NEIGHBOURHOOD AROUND 18<sup>TH</sup> OCTOBER 2022. IT WOULD MOVE WEST NORTHWESTWARDS TOWARDS WESTCENTRAL AND ADJOINING SOUTHWEST BAY OF BENGAL BECOMING LOW PRESSURE AREA AROUND 20<sup>TH</sup> OCTOBER, 2022.

SCATTERED TO BROKEN LOW AND MEDIUM CLOUDS WITH EMBEDDED INTENSE TO VERY INTENSE CONVECTION LAY OVER NORTHEAST, EASTCENTRAL & SOUTH BAY OF BENGAL AND ANDAMAN SEA. SCATTERED LOW AND MEDIUM CLOUDS WITH EMBEDDED MODERATE TO INTENSE CONVECTION LAY OVER NORTHWEST BAY OF BENGAL.

**PROBABILITY OF CYCLOGENESIS (FORMATION OF DEPRESSION) DURING NEXT 120 HRS:**

| 24 HOURS | 24-48 HOURS | 48-72 HOURS | 72-96 HOURS | 96-120 HOURS |
|----------|-------------|-------------|-------------|--------------|
| NIL      | NIL         | NIL         | NIL         | NIL          |

**ARABIAN SEA:**

YESTERDAY'S CYCLONIC CIRCULATION OVER CENTRAL ARABIAN SEA PERSISTED OVER THE SAME REGION 0300 UTC OF TODAY, THE 16<sup>TH</sup> OCTOBER, 2022

A FRESH CYCLONIC CIRCULATION LIES OVER SOUTHEAST ARABIAN SEA & ADJOINING KERALA COAST AT 0300 UTC OF TODAY, 16<sup>TH</sup> OCTOBER, 2022.

SCATTERED TO BROKEN LOW AND MEDIUM CLOUDS WITH EMBEDDED INTENSE TO VERY INTENSE CONVECTION LAY OVER CENTRAL ARABIAN SEA, SOUTHEAST ARABIAN SEA AND LAKSHADWEEP ISLANDS AREA. SCATTERED LOW AND MEDIUM CLOUDS WITH EMBEDDED WEAK TO MODERATE CONVECTION LAY OVER SOUTHWEST ARABIAN SEA AND COMORIN AREA.

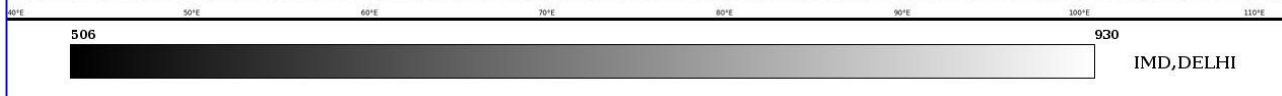
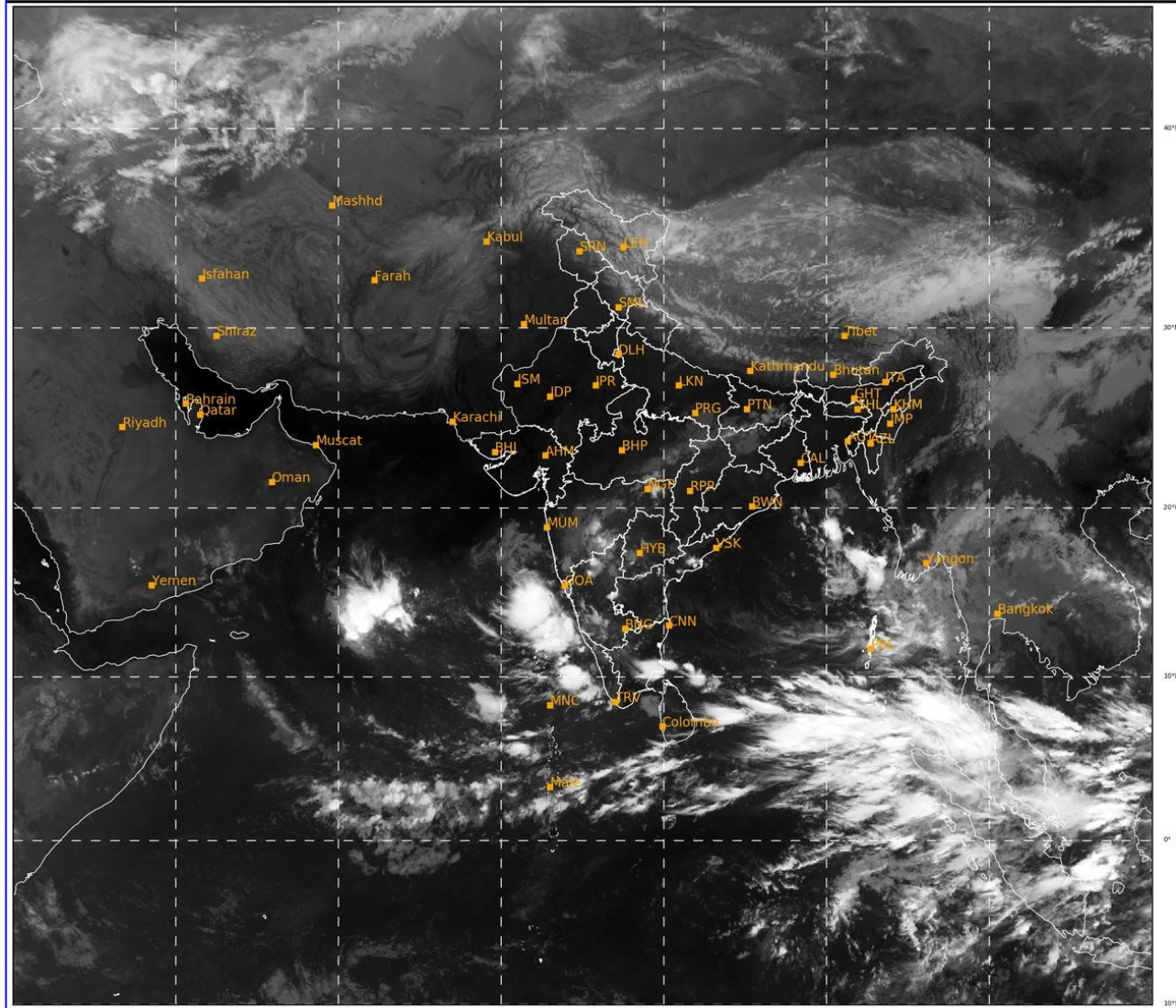
**PROBABILITY OF CYCLOGENESIS (FORMATION OF DEPRESSION) DURING NEXT 120 HRS:**

| 24 HOURS | 24-48 HOURS | 48-72 HOURS | 72-96 HOURS | 96-120 HOURS |
|----------|-------------|-------------|-------------|--------------|
| NIL      | NIL         | NIL         | NIL         | NIL          |

**Remarks:** NIL

SAT : INSAT-3D IMG  
IMG\_TIR1 10.8 um  
L1C Mercator

16-10-2022/(0300 to 0326) GMT  
16-10-2022/(0830 to 0856) IST



Cloud distribution: (a) Isolated: <25%, Scattered:25-50%, Broken: 51-75%, Solid:>75%, Convection Intensity: (a) Weak: Cloud Top Temperature (CTT) >-25°C, (b) Moderate: CTT: - 25°C to -40°C, (c) Intense: CTT: - 41°C to -70°C and (d) Very Intense: : Less than -70°C  
PROBABILITY OF CYCLOGENESIS (FORMATION OF DEPRESSION):NIL: 0%, LOW: 1-33%, , MODERATE: 34-66% AND HIGH: 67-100%  
This is a guidance Bulletin for WMO/ESCAP Panel Member countries. Visit respective National websites for Country specific Bulletins